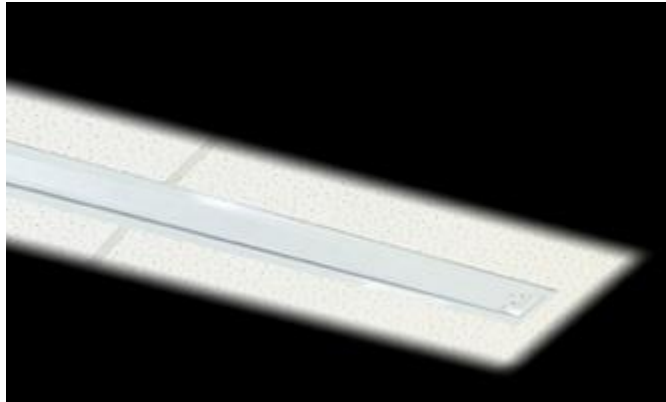


If your screen is mounted on the ceiling your screen will look like below:



To gain access to the limit switches for your IC In-ceiling motorized screen, you will need to gain access to the limit switch sockets on the motor:



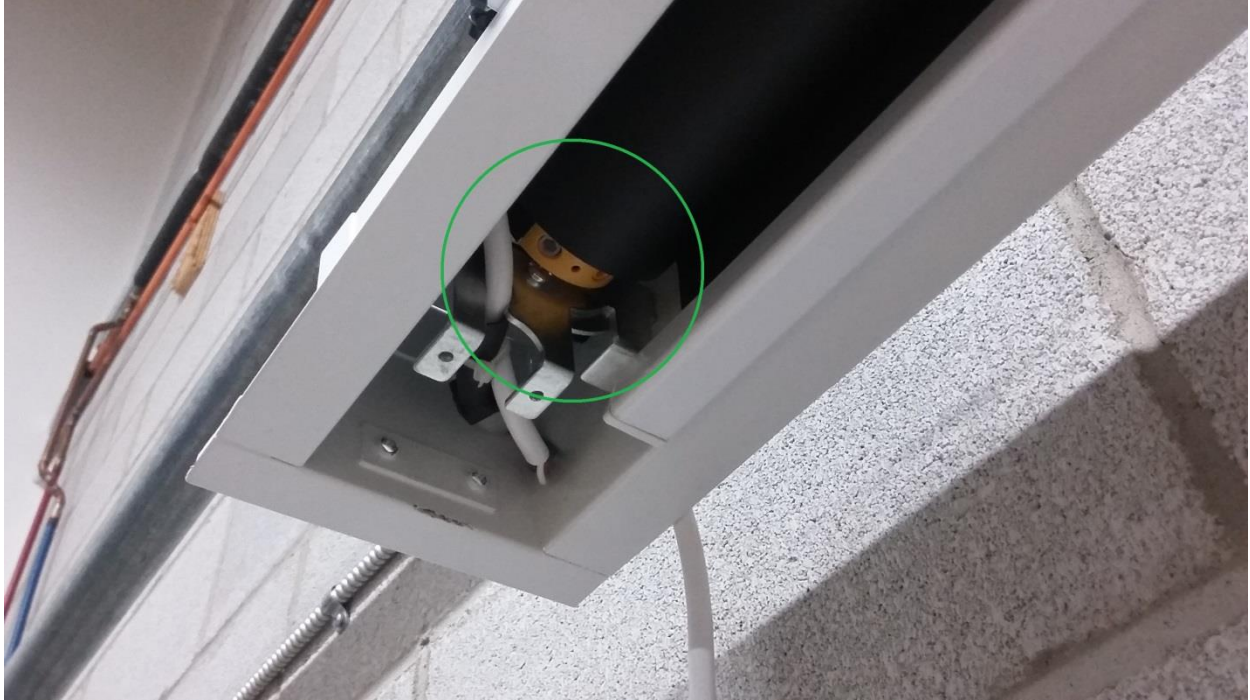
To gain access to the sockets, we recommend taking the white plastic cap off (circled in blue below), so you can reach inside and access the sockets.

You can also take the face plate (maintenance hatch, the whole plate below) off, by unscrewing the two screws circled in red. There will be another 2 screw on the other side as well.



After you taken off the face plate, you will see the motor in sight:

The two sockets (circled in green below), the grey one is the upper limit while the yellow one is the lower limit.



To adjust the lower limit, you will need to use the yellow limit adjustment tool as seen below:



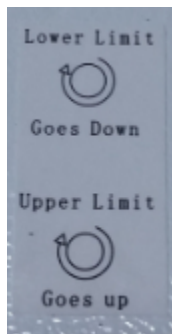
To adjust the lower limit, face up towards the socket and insert the adjustment tool into the yellow socket. Please refer to the maximum amount of black drop available on your screen, do not lower the lower limit more than the maximum black drop.

To lower the lower limit, rotate the socket clockwise.

To raise the lower limit, rotate the socket counter-clockwise.

If your screen is already extended to a position lower than your desired lower limit, rotate the socket counter-clockwise, then bring the screen up using your remote and extend your screen again. Your screen should stop at a higher position than before. If you need to further raising the lower limit, repeat the above process.

If your screen is at the lower limit and you wish to lower the lower limit more, press DOWN on your remote control, then rotate the socket clockwise. Your screen will respond and extend itself with your adjustment.



(There will be a sticker on the face plate indicating the direction of the rotation and the position of the sockets)

Do not adjust the upper limit as the upper limit should be pre-adjusted. After you installed the screen, check your upper limit and see if it needs adjustments. Only adjust the upper limit if you are a professional installer or is under professional supervision. Adjusting the upper limit too short could potentially damage the housing and/or the fabric.

To lower the upper limit, rotate the socket clockwise.

To raise the upper limit, rotate the socket counter-clockwise.

If your screen is already retracted to a position higher than your desired upper limit, rotate the socket counter-clockwise, then bring the screen down using your remote and retract your screen again. Your screen should stop at a lower position than before. If you need to further lowering the upper limit, repeat the above process.

If your screen is at the upper limit and you wish to raise the upper limit more, press UP on your remote control, then rotate the socket clockwise. Your screen will respond and retract itself as you rotate.